



“WELCOME TO HARP DESIGN”



OUR CLIENTS



INTERIOR DESIGN

“The most important thing about being a designer is the ability to listen!”

At Harp you get a team of listeners who will deliver a design that works for you and your business. You will find that we become an extension of your team and create designs that compliment your branding and style.



The background of the slide features three white coffee cups with brown circular logos. The logos contain the text 'THE TASTE OF LATIN AMERICA', 'MAS', 'ORGANIC COFFEE', and 'HEALTHY FOOD'. The cups are set on an orange surface with scattered coffee beans. A grey rounded rectangle with a teal border is overlaid on the left side, containing the text.

BRANDING AND GRAPHICS

“A brand is a voice and a product is a souvenir”

If you need more than just Interior Design, you don't need to look any further. At Harp we have a team of multiskilled designers who can guide you through the branding process for a fresh logo or rebrand, we'll make sure the psychology of your graphics and brand messages are aligned.

PROJECT MANAGEMENT

Project Management that can be tailored to your needs, with as little or as much help as you want, working with you to deliver your project to the best price, quality and on time. Harp Design are experts in making sure your project runs smoothly. You will receive guidance to ensure you are realistic in your expectations and you don't blow your budget.

WHY USE HARP DESIGN?

The Team at Harp are “Brand Geeks” taking your Brand to another level through Brand Strategy, Brand Development and Interior Design. You get assistance to ensure your project runs smoothly, working with experienced people who really care about your business. The team at Harp are committed to help you get more from your time, offering a brand, design and layout service, as well as commercially viable advice for your space.



CAPABILITY STATEMENT

Harp Design are a forward thinking, business focused, Branding, Interior Design and Project Management business who concentrate on the flow and tap into the psychology behind your business and its culture.

The Design Team at Harp work with Business Premises, Housing Developments and Hospitality Venues, creating and reinventing brand and interiors, helping people grow successful businesses.

With a team of 6 Interior Designers and an Architect, we are capable of taking on 40-50 projects at any one time, depending on the size of them. Hayley Roy (Founder) has worked in manufacturing and has business management, collaborative focus, that guides the team to consider not only great design, but the viability and ROI of each project. The Design Team are a positive, integrity driven and solution focused group of people and clients' feedback is always positive. Harp Interiors are an Altius Assured Vendor.

Harp's designers are fully trained in the following Design Software Packages:

- ✓ AutoCAD
- ✓ Adobe Suite including Photoshop, InDesign, Illustrator
- ✓ 3D Studio Max
- ✓ Vector works
- ✓ Sketchup with bolt on render packages



SUCSESSES

Harp Design have successfully designed and project managed the 1st Project of 5 proposed, over the next 3 years, for a hotel and holiday park group "Beyond Escapes". They opened their first £12million build in Devon at the start of 2018.

Harp Design have an ongoing relationship with Essex University, Colchester Hospital, Many Pub Groups as well architectural and multidisciplinary firms. Nominated and shortlisted for the Restaurant and Bar Design Awards in 2019 we are very proud of Restaurant Zuaya in Kensington High Street.

There are many other successful projects that we've completed. Please see the "Good Vibes" section of our website for the latest news and projects we've been working on.

On the following pages you will see some of our favourite projects and what the clients thought of their experience with Harp Interiors.....

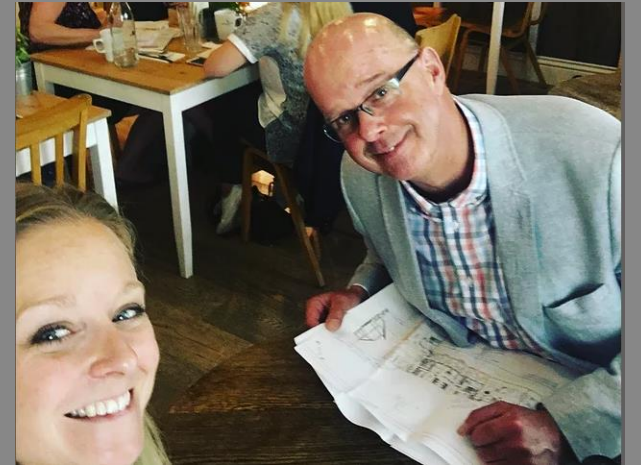
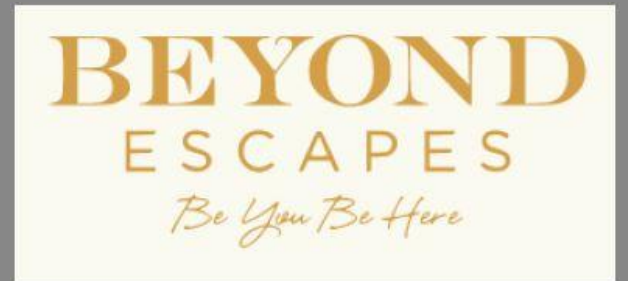


RYEDALE LEISURE HOLDINGS

"Hayley and her team at Harp Interiors have become an integral part of my team at Beyond Escapes"

"Nothing is too much trouble – and the Harp team buys into our principle of 'fun work' with enthusiasm"

From Chris Brooks – Ryedale Leisure Holdings



Ryedale 3D Visuals

HARP DESIGN 01206 329062



RYEDALE

Completed Photos



PUNCH TAVERNS – Case Study – The Vauxhall Griffin

We worked with Punch on this wonderful refurbishment to reawaken a pub in the heart of London.

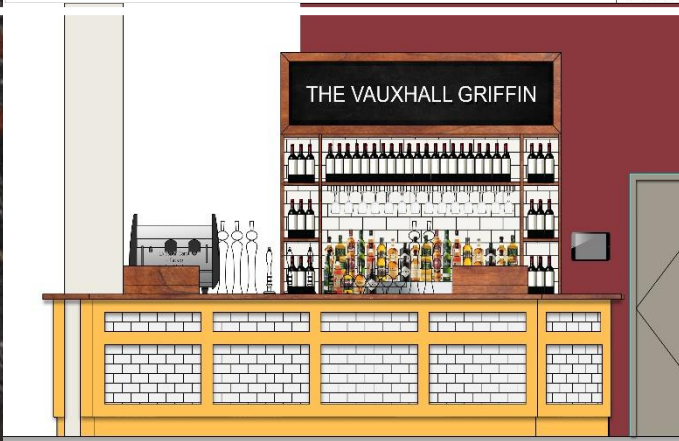
At Harp we work with many of the Pub Groups in different ways to suit the type of work that is required.

PUNCH



The Vauxhall Griffin

Design



THE VAUXHALL GRIFFIN Completed Photos



EI GROUP / STONEGATE

We work ongoing with EI Group (Now Stonegate) and have complete an average of 30 pubs a year with them. We work from their template and assist in evolving this with each pub we do.

At Harp we work with many of the Pub Groups in different ways to suit the type of work that is required.

Craig Gresham – Development Director at Stonegate says
“The Harp Team are eager and keen, they are always interested in doing the right thing and are very responsive”



Craft Union

Design

HARP DESIGN 01206 309062

DRAPERY

WALL FINISHES

PAINT

LIGHTING

FLOORING FINISHES

FABRICS

FURNITURE LAYOUT

Tables:

- 4 x New Circle Dining Tables, 700mm dia. Medium Walnut finish.
- 1 x New Circle Dining Table, 600mm dia. Medium Walnut finish.
- 3 x New Circle Poser Tables, 600mm dia. Medium Walnut finish.
- 2 x New Square Poser Tables, 600mm x 600mm. Medium Walnut finish.
- 4 x New Rectangle Poser Tables, 1200mm x 600mm. Medium Walnut finish.
- 1 x New Square Dining Tables, 600mm x 600mm. Medium Walnut finish.
- 2 x New Rectangle Dining Tables, 1200mm x 900mm. Medium Walnut finish.

Chairs & Bar Stools:

- 4 x New Low Stools, Upholstered: Geometric Fabrics, Ethnic Lapis E7. Medium Walnut finish.
- 7 x New High Stools, Upholstered: Panaz, Cabout Collection, Hunter Check. Medium Walnut finish.
- 7 x New High Stools, Upholstered: Geometric Fabrics, Ethnic Cali-Au-Lah E8. Medium Walnut finish.
- 7 x New High Stools, Upholstered: Geometric Fabrics, Ethnic Lapis E7. Medium Walnut finish.
- 7 x New High Stools, Upholstered: Sunbury, Nappa Smoke 8717. Medium Walnut finish.
- 4 x New Houston Side Chair, Upholstered: Geometric Fabrics, Ethnic Lapis E7. Medium Walnut finish.
- 4 x New Houston Side Chair, Upholstered: Panaz, Cabout Collection, Hunter Check. Medium Walnut finish.
- 4 x New Houston Side Chair, Upholstered: Sunbury, Nappa Smoke 8717. Medium Walnut finish.
- 4 x New Houston Side Chair, Upholstered: Sunbury, Nappa Smoke 8717. Medium Walnut finish.
- 8 x New Tall Chairs, Upholstered: Back: Panaz, Cabout Collection, Hunter Check, Seat: Geometric Fabrics, Ethnic Lapis E7. Medium Walnut finish.
- 8 x New Tall Chairs, Upholstered: Back: Geometric Fabrics, Ethnic Lapis E7, Seat: Panaz, Cabout Collection, Hunter Check. Medium Walnut finish.

6x Retro Style Metal Table 800 x 800mm
4x Retro Style Metal Table 600 x 600mm
24x Retro Style Chair

8x Task Poser Table 700x700mm
12x Chester 6 Seater A Frame Picnic Table

- Astro Tuff to be removed
- Walls: Paint, Dulux Heritage Stone
- Decking: Paint Black with nosing
- Balustrade: Paint Dark Grey
- Proposed Raining with Hard Roof (Smoking Shelter)
- Board over outside drinking area
- 3x New Bulk Lights
- 3x New Flood Lights

CONTRACTOR Fixed Seating: Wooden fixed seating with upholstered seat pads

CRAFT UNION Completed Photos



PUNCH TAVERNS – Case Study – The Garratt Tavern

We worked with Punch on this quirky refurbishment to rebrand and rename a pub in the heart of London.

At Harp we work with many of the Pub Groups in different ways to suit the type of work that is required.

PUNCH



The Garratt Tavern

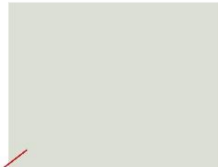



Design

HARP DESIGN 01206 329062



SITE NAME: THE GARRATT TAVERN, GARRATT LANE, LONDON DATE: 31/07/2017



| | |
|---|---|
|  Upper Walls, behind bar in shelving area and ceiling: Dulux 30gy 73053 eggshell finish |  Bar Front, window frames door frames and framework: Dulux 42gy 09205 eggshell finish |
|  Wall paneling (lower walls): Dulux 10gy 36096 eggshell finish |  Wall near men's WC, behind bar and pillar: Dulux 10gb 10222 eggshell finish |

Paint Specification



PROPOSED GROUND FLOOR PLAN

THE GARRATT TAVERN Completed Photos



THE FORGE KITCHEN

"The Team at Harp are clearly as passionate towards and as committed to our cause as we were.

Put simply, Harp are professional, lovely people who will absolutely deliver your interior design needs and for that we would 100% recommend them."

Grant & Robyn Owen

THE
FORGE
KITCHEN

· Smokehouse & Bar ·



The Forge Kitchen 3D Visuals

HARP DESIGN 01206 329062



THE FORGE KITCHEN

Phase 1 Complete



THE FORGE KITCHEN

Phase 2 Complete



HARP DESIGN 01206 329062

ZUAYA

"Harp helped us create a successful restaurant in the heart of High Street Kensington, grabbing attention of big magazines like Forbes and the Evening Standard within months of opening.

We have new projects coming up in London, from which Harp Interiors have already been commissioned there was never a doubt on working with them again.

Thank you Harp team!"

Arian Zandi – Owner of Zuaya London

This project was nominated and shortlisted for the 2019 Restaurant and Bar Design awards.

Zuaya



Zuaya 3D Visuals



ZUAYA

Completed Photos



FRATELLI'S

"From the first meeting until the final handover, Harp were nothing short of incredible. Their passion and professionalism is second to none.

Would highly recommend, and would use their services every time. Thank you for making our dream come true."

Mario, Carmello & Antonino Di Giorgi

HARP DESIGN 01206 329062

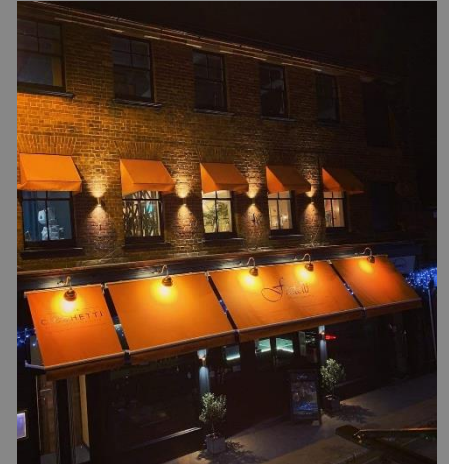


Fratelli's 3D Visuals



FRATELLI'S

Completed Photos



SHEARMAN & STERLING

"The communication that the team at Harp have is excellent.

The designers we worked with were mindful of budget restraints and helped us to value engineer the project.

All in all we received a personal service and would highly recommend Harp Interiors."

David Rutherford – DMR Building Services



Shearman & Sterling 3D Visuals



PERRYWOOD GARDEN CENTRE

Tiptree & Sudbury

“Hayley and her team have great energy and their success in growing their business speaks for itself! Our project encountered some bumps with the contractors (which project doesn’t!) but their leverage with contractors really helped to get things sorted. Our coffee shop still looks fantastic today and we are now using the same colours and furniture in our new Sudbury store, sourcing this via Harp”

Hannah Powell - Communications & HR Director



PERRYWOOD GARDEN CENTRE

Before Photos



PERRYWOOD
GARDEN
CENTRE
3D VISUALS



PERRYWOOD GARDEN CENTRE

Finished Pictures



PERRYWOOD GARDEN CENTRE

Finished Pictures



CONTACT & FOLLOW

enquiries@harpdesign.co.uk

hayley.roy@harpdesign.co.uk

07887 751966

01206 329062

www.harpdesign.co.uk

